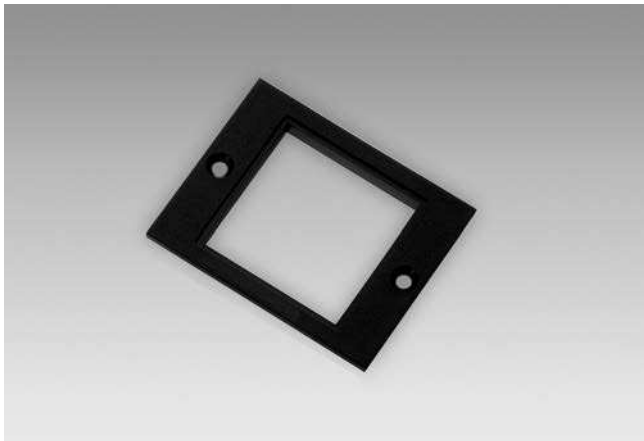


Accessories

Adaptor plates

Adaptor plate face 60 x 75 mm



Description

Adaptor plate for screw mount,
face dimensions 48 x 48 mm.
Cutout 50.5 x 50.5 mm.

Part number

Z 118.033 Adaptor plate for screw mount,
face 60 x 75 mm

Suitable for

BE134, NE131, NE134, NE210, NE216, TA134

Dimensions

